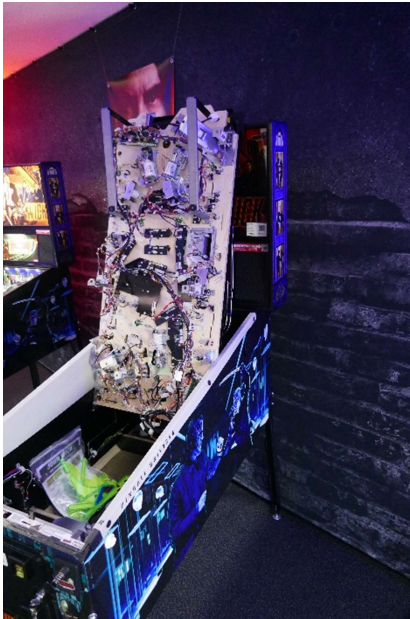


John Wick Shooter Lane Protector

Art.-Nr. 10002947 at www.pu-parts.com

Preparation: Please switch off the machine and disconnect the power plug. Remove the playfield glass and take the balls out of the machine or the ball trough. If available, please use assembly blades (item no. 10000009 at pu-parts.com). Raise the playfield vertically in the service position.



Included in delivery:

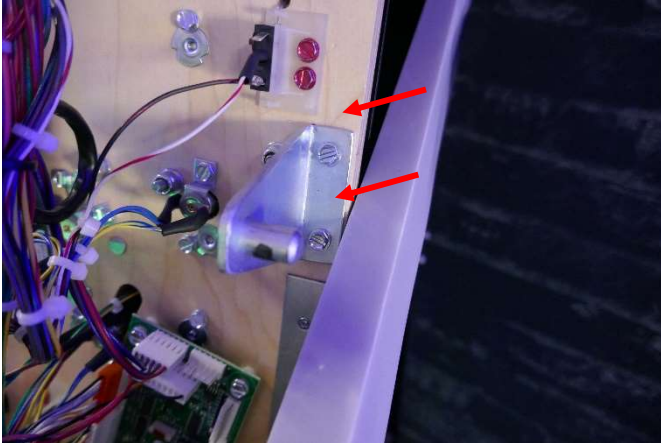
- 1 x Shooter Lane Protector (3-piece)
- Protective film on both sides (remove before fitting)
- 1 x adhesive pad

Tools required:

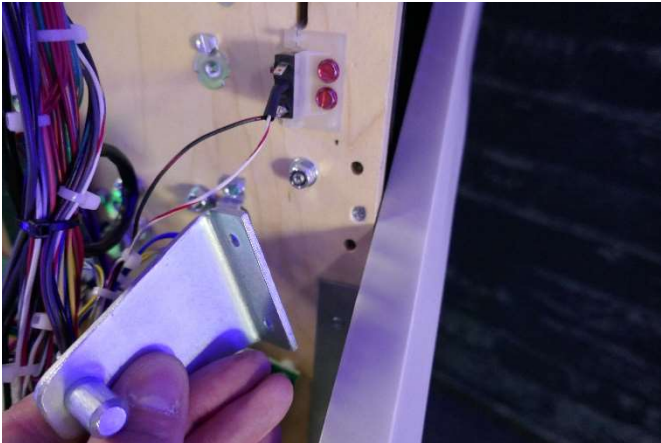
- Phillips screwdriver PH2
- 1/4" nut driver
- 11/32" nut driver
- Assembly Blades (optional)

Step 1: Unscrew the playfield bracket ("pivot bracket")

Unscrew the two ¼" screws of the playfield bracket.

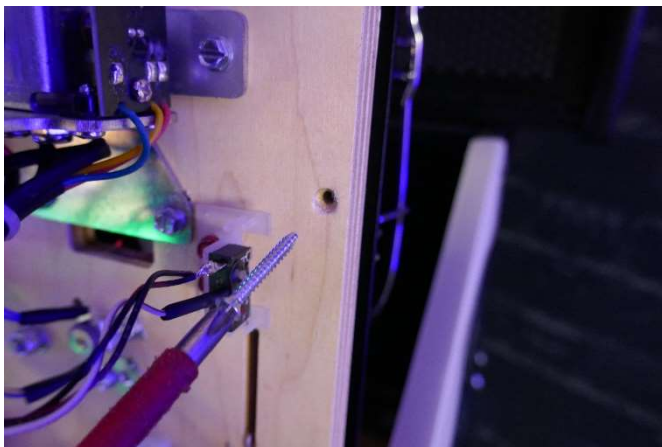
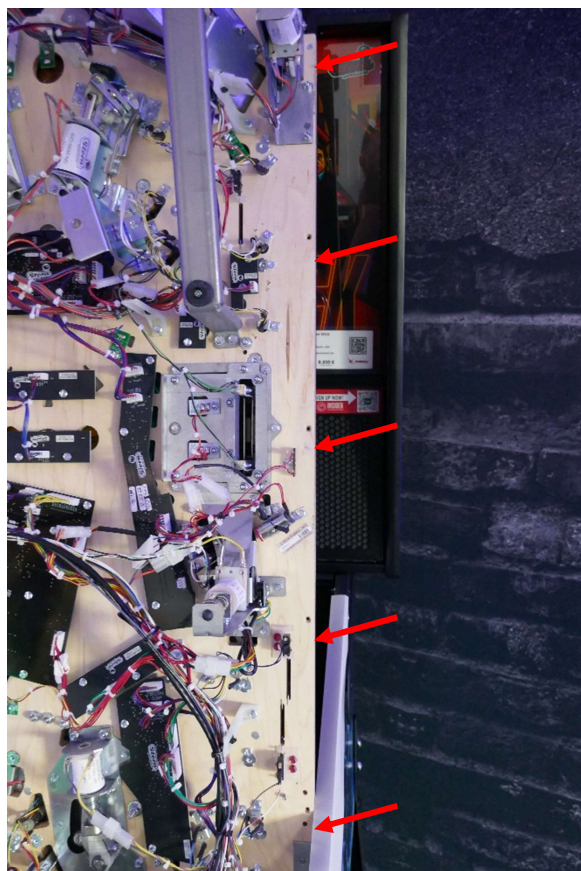
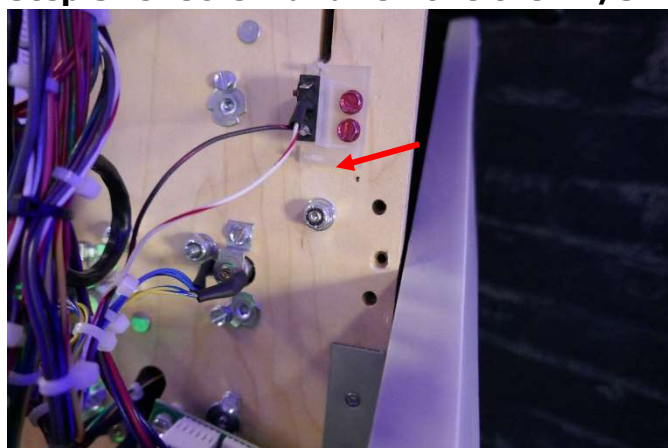


Remove the playfield bracket and set aside.

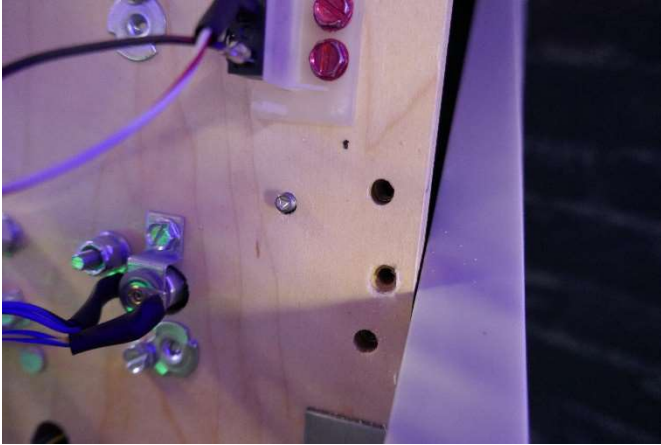


Step 2: Remove the black profile

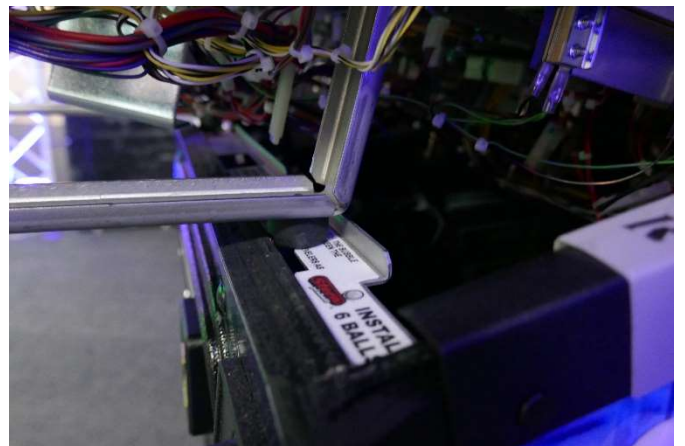
Unscrew 5 x flathead Phillips screws (PH2) and set aside.

**Step 3: Unscrew and remove the 11/32" nut + washer of the ramp**

Then press the threaded bolt in slightly so that the ramp flap on the playfield has some gap/space to the playfield.



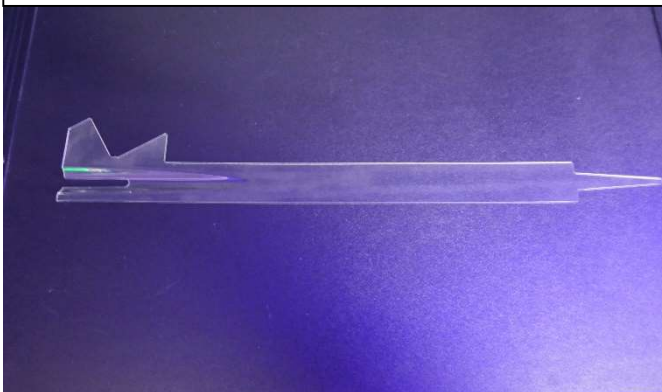
Step 4: Raise the playfield into the horizontal service position



Step 5: Installing the Shooterlane protector (part 1)

Remove the protective film from both sides of the shooter lane protector and insert it into the shooter lane. Make sure that the tip or nose is centered in the shooter lane (4). Also ensure that the shooter lane protector is flush to the edge of the wood at the end of the shooterlane (3).

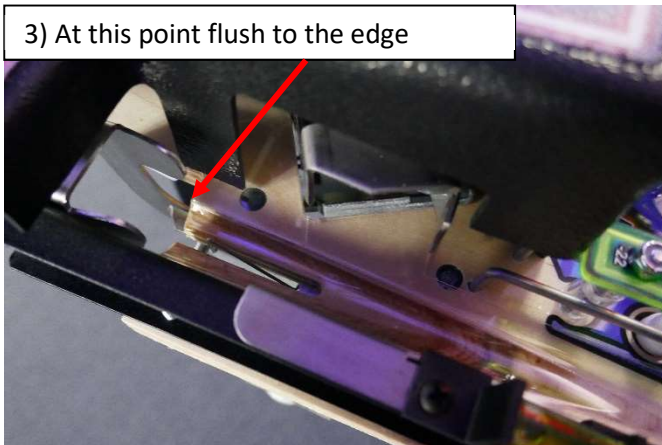
1) Remove the protective film from both sides



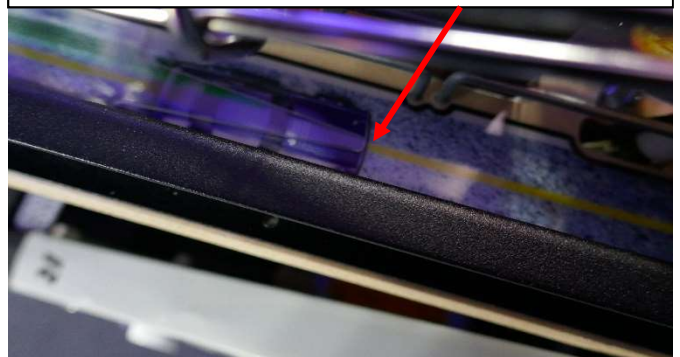
2) Insert it into the shooter lane



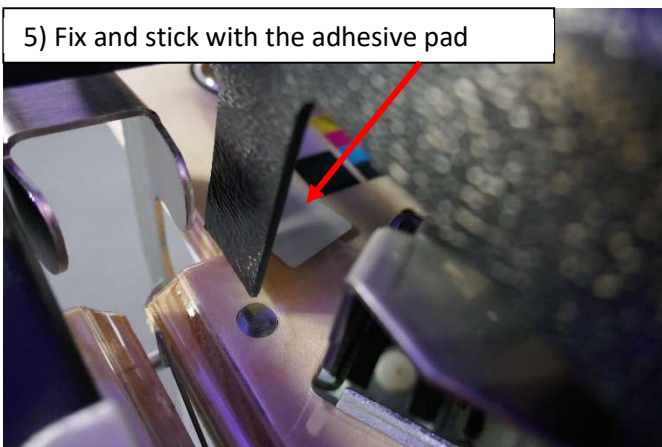
3) At this point flush to the edge



4) Place the tip/nose in the centre of the shooter lane

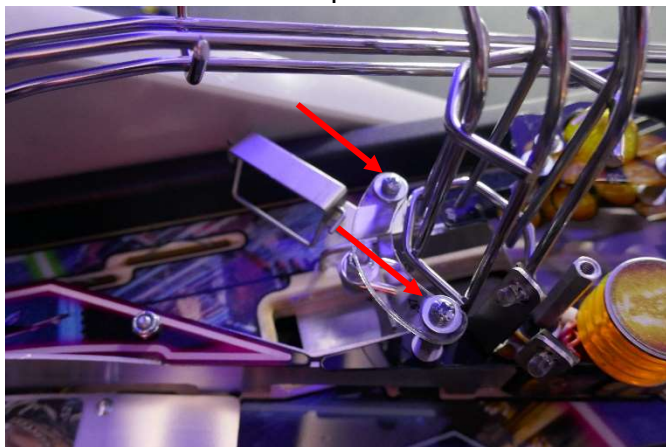


5) Fix and stick with the adhesive pad



Step 6: Remove the metal bracket/wiregate

Unscrew the two Phillips screws and remove the plastic -57.

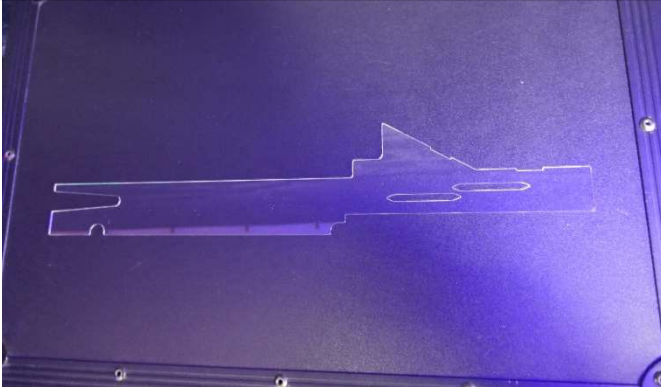


Unscrew the 1/4" hex post and the Phillips screw and remove the wiregate.

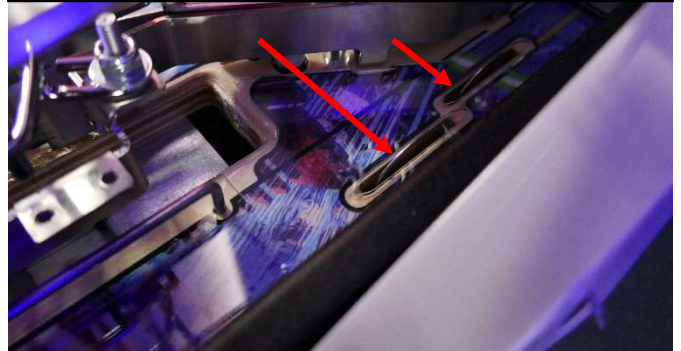


Step 7: Installing the Shooterlane protector (part 2)

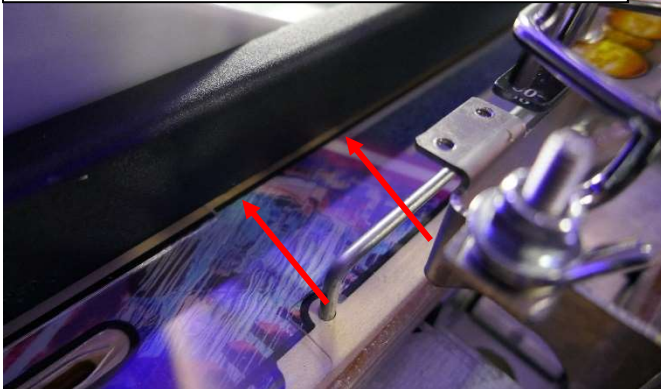
1) Remove the protective film from both sides



2) Insert the shooter lane protector. The cut-outs for the microswitches must be centered!



3) Slide the tab under the black rail



4) Slide the protector carefully under the metal flap, then press down the flap/ramp to fix it



Step 8: Installing the Shooterlane protector (part 3)

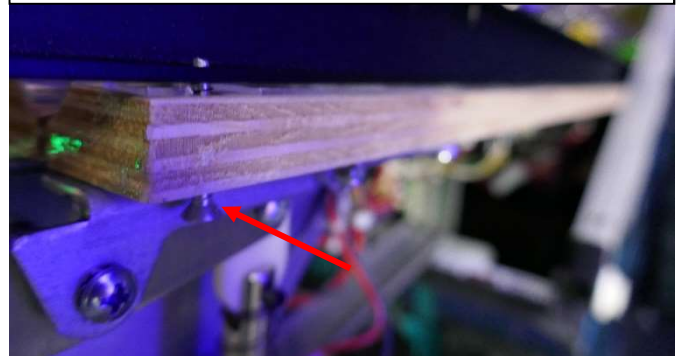
1) Remove the protective film from both sides



2) Place the protector under the black rail, flush with the 1st part of the shooter lane protector.

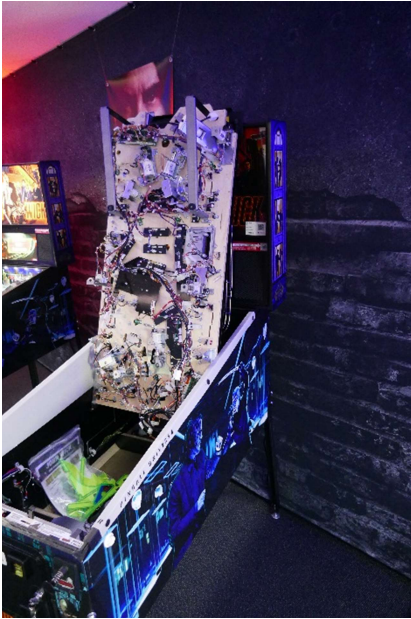
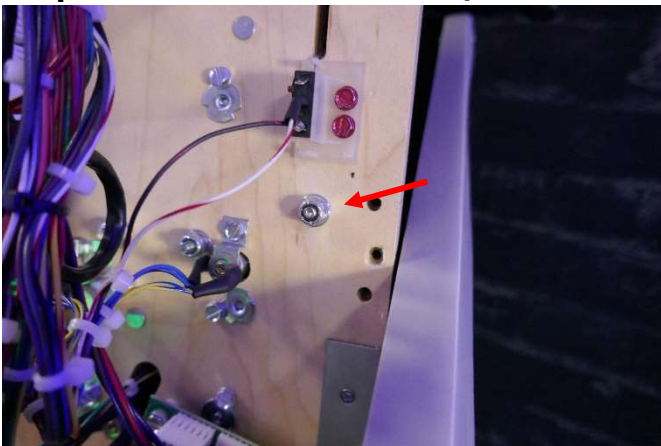


3) Screw the top screw from step 2 back in to secure the protector



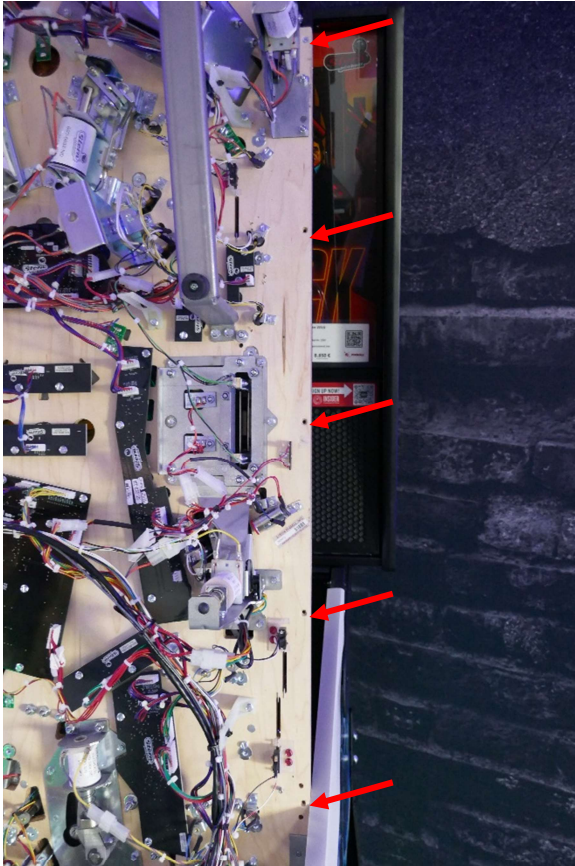
Step 9: Reassemble the metal bracket/wiregate & screw

To do this, please work backwards through step 6.

Step 10: Raise the playfield into the vertical service position**Step 11: Reassemble the 11/32" nut of the ramp + washer**

Step 12: Tighten the black profile

Tighten 5 x flathead Phillips screws (PH2)

**Step 13: Installing and tightening the playfield bracket ("pivot bracket")**

To do this, please work backwards through step 1

Note:

After installation of a shooter lane protector, it may be necessary to readjust the rollover contacts in the shooter lane.